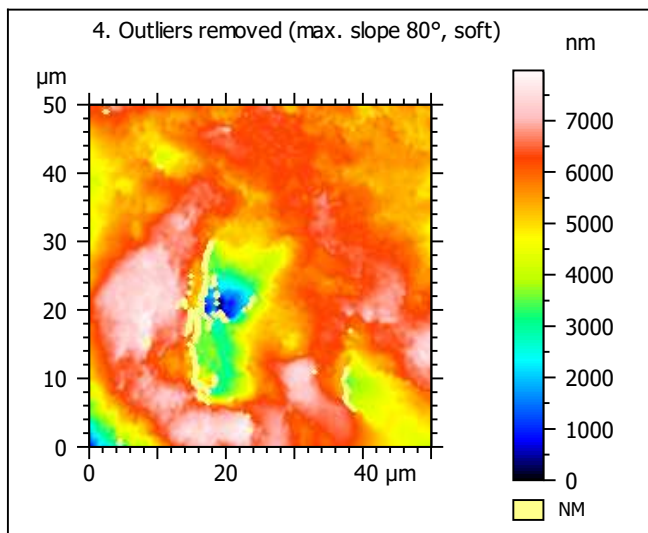
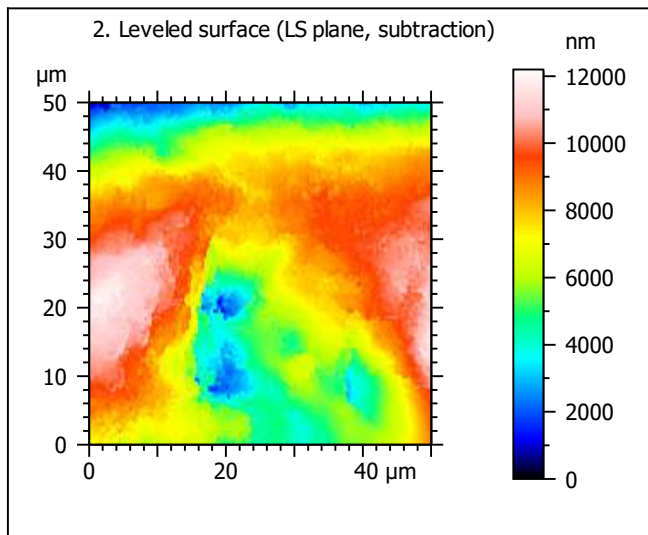
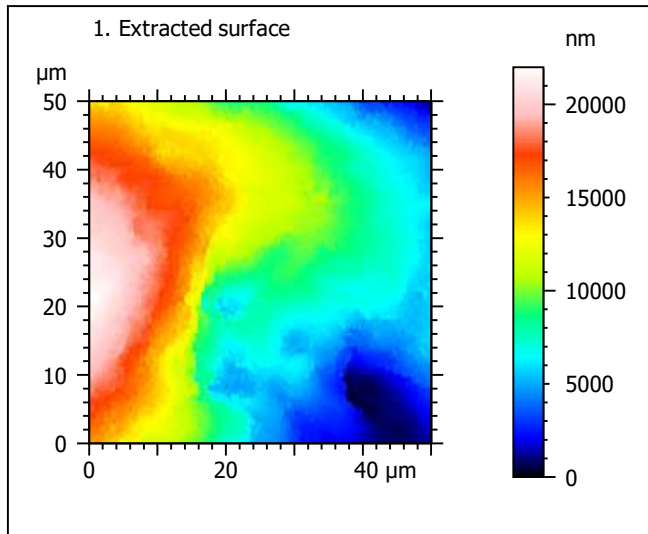
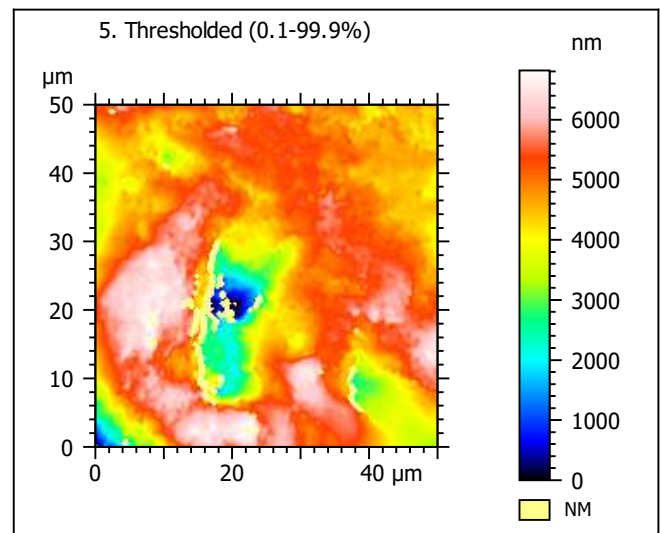
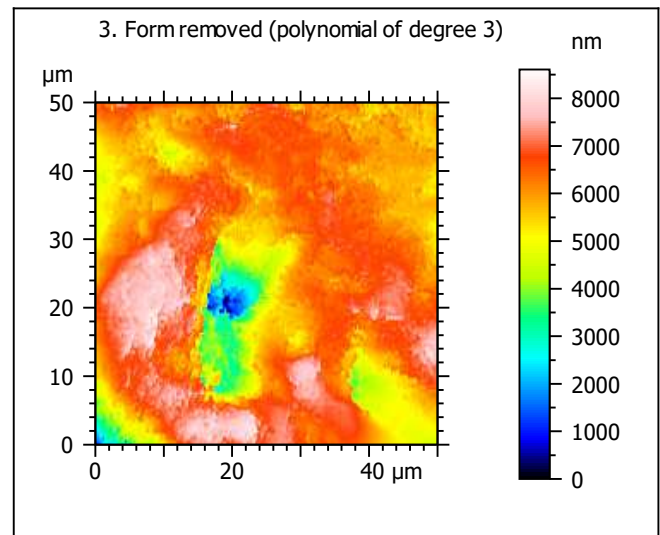


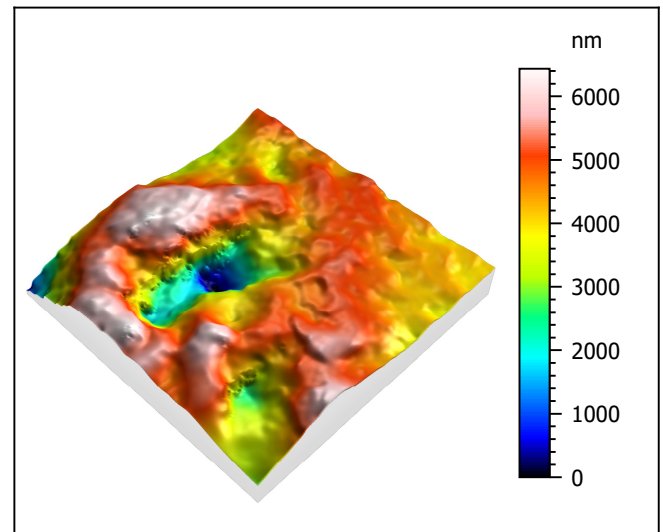
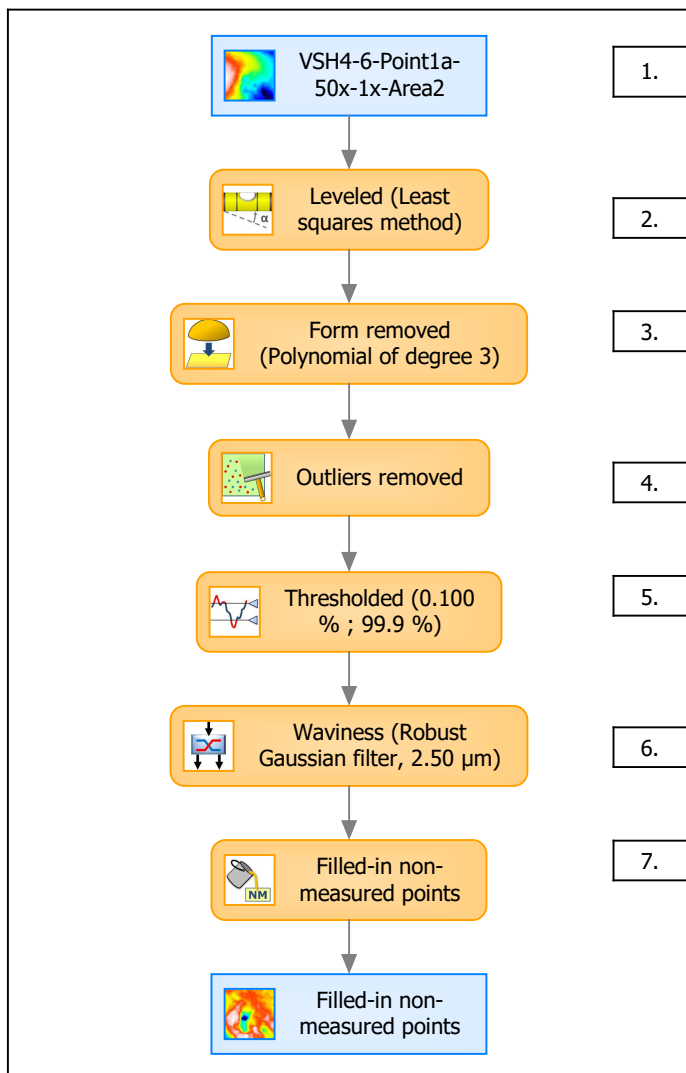
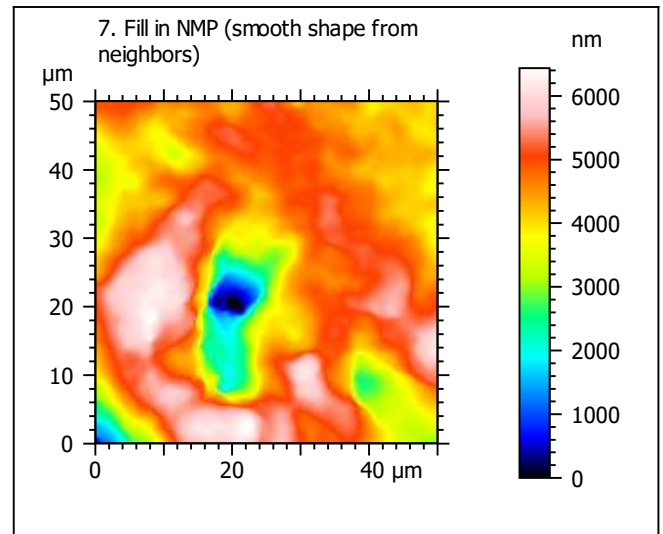
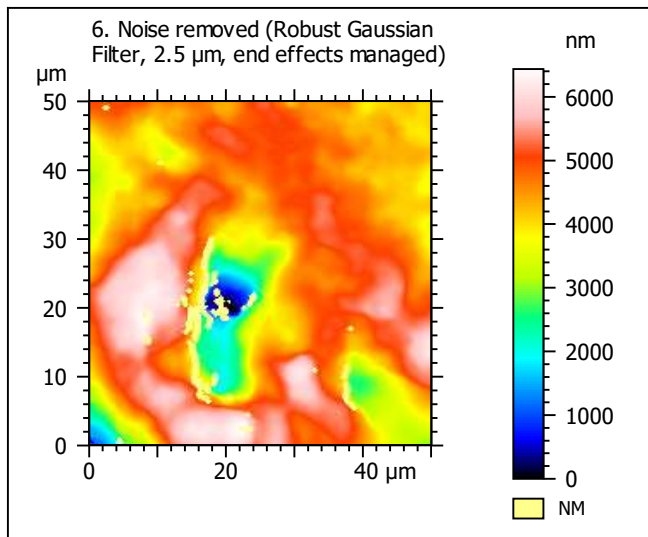
Template to process all extracted 50x50  $\mu\text{m}$  surfaces, acquired with the LEXT 4000 with the 50x/0.95 objective at 1x zoom

## A. Processing



Identity card			
Name:	VSH4-6-Point1a-50x-1x-Area2		
File path:	D:\Data\An...\VSH4-6-Point1a-50x-1x-Area2.sur		
Axis:	X		
Length:	50.0	μm	
Size:	201	points	
Spacing:	0.250	μm	
Axis:	Y		
Length:	50.0	μm	
Size:	201	points	
Spacing:	0.250	μm	
Axis:	Z		
Length:	21995	nm	
Size:	12074	digits	
Spacing:	1.82	nm	
NMP ratio:	0.00 % (0 Pts)		





Identity card			
Name:	VSH4-6-Point1a-50x-1x-Area2 > Levelled (Lea...		
Axis:	X		
Length:	50.0	μm	
Size:	201	points	
Spacing:	0.250	μm	
Axis:	Y		
Length:	50.0	μm	
Size:	201	points	
Spacing:	0.250	μm	
Axis:	Z		
Length:	6436	nm	
Size:	3533	digits	
Spacing:	1.82	nm	
NMP ratio:	0.00 % (0 Pts)		

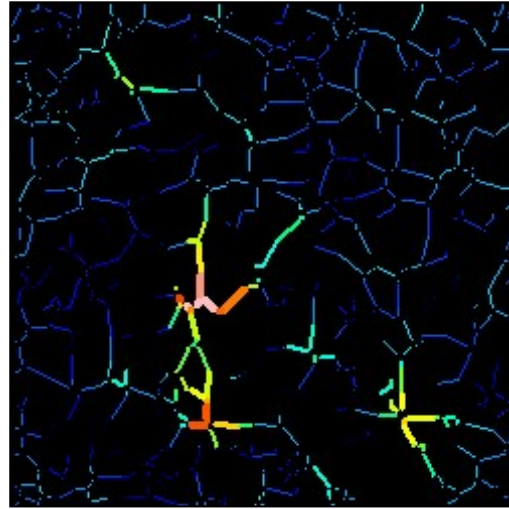
**Analyses:**  
**8. ISO 25178**  
**9. Furrow**  
**10. Texture isotropy and direction**  
**11. SSFA**

## B. Analyses

### 8. ISO 25178-2 parameters on surface #7

ISO 25178		
Height Parameters		
Sq	991	nm
Ssk	-1.18	
Sku	5.34	
Sp	1927	nm
Sv	4509	nm
Sz	6436	nm
Sa	737	nm
Functional Parameters		
Smr	14.1	%
Smc	1081	nm
Sxp	2687	nm
Spatial Parameters		
Sal	6.45	μm
Str	0.566	
Std	81.8	°
Hybrid Parameters		
Sdq	0.404	
Sdr	6.23	%
Functional Parameters (Volume)		
Vm	0.0324	μm <sup>3</sup> /μm <sup>2</sup>
Vv	1.11	μm <sup>3</sup> /μm <sup>2</sup>
Vmp	0.0324	μm <sup>3</sup> /μm <sup>2</sup>
Vmc	0.739	μm <sup>3</sup> /μm <sup>2</sup>
Vvc	0.928	μm <sup>3</sup> /μm <sup>2</sup>
Vvv	0.185	μm <sup>3</sup> /μm <sup>2</sup>

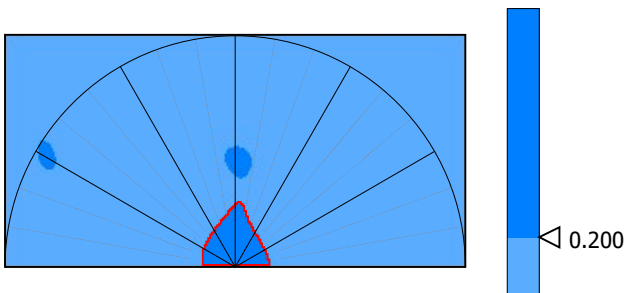
### 9. Furrow analysis surface #7



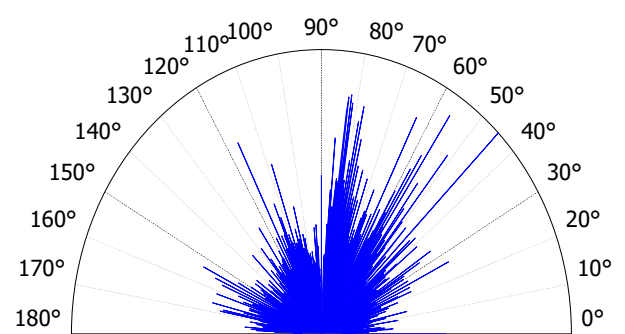
All furrows are shown.

Parameters	Value	Unit
Maximum depth of furrows	2536	nm
Mean depth of furrows	547	nm
Mean density of furrows	2671	cm/cm2

### 10. Texture isotropy and direction on surface #7



Parameters	Value	Unit
Isotropy	49.9	%
Periodicity	23.2	%
Period	11.6	μm
Direction of period	89.0	°



Parameters	Value	Unit
Isotropy	56.6	%
First Direction	45.0	°
Second Direction	56.2	°
Third Direction	63.5	°

